

RADview Central

Network Management System



- Large scale (>25K NEs) deployment support for RADview.
- Assignment of tasks and jobs (e.g., software upgrade, configuration backup) across the entire network.
- Comprehensive zero-touch management utility for full automation of the deployment and provisioning process.
- Mapping of NEs to RADview domain servers, with flexible domain partitioning according to IP address, geography, or other criteria.
- Customizable REST NBI for integration with third-party NMS and OSS/umbrella systems.
- Friendly, web-based user interface.

RADview Central allows service providers to monitor and manage a virtually unlimited number of network elements (NEs), while enabling flexible segmentation of the network to domains.

TECHNOLOGY AND ARCHITECTURE

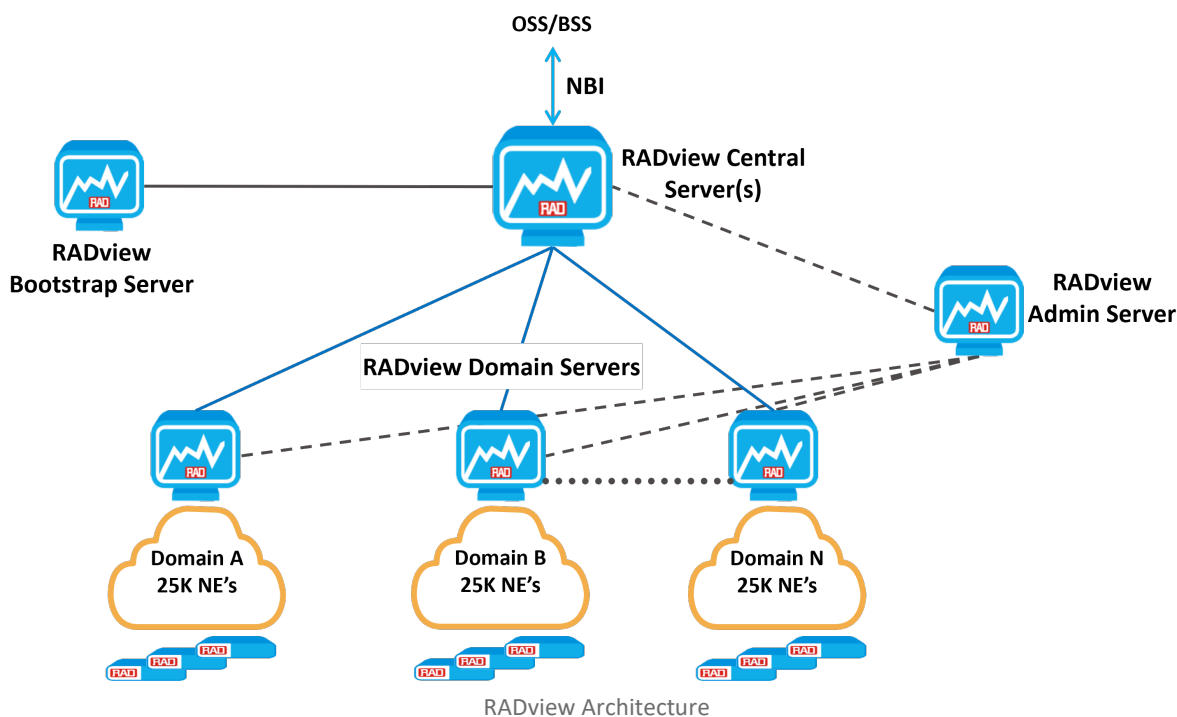
RADview Central

RADview Central manages a vast number of NEs using multiple Domain servers, and controls the assignment of network elements to Domain servers according to predefined policies.

RADview Central provides centralized functionality for managing the NE inventory, running tasks, managing the Zero Touch process, and delivers centralized REST NBI for these functionalities.

RADview Domain

Please see RADview Domain datasheet.



RADview Admin Server

The RADview Admin server manages the performance and condition of the RADview Central server, the Bootstrap server, and the Domain servers. It is also responsible for Disaster recovery.

RADview Bootstrap Server

The Bootstrap server stores the NE configuration used during Zero-Touch provisioning.

Specifications

HARDWARE REQUIREMENTS

Below are the hardware requirement tables.

Hub (Central) Server

Requirements	Number of Managed Network Elements				
	Demo Scale	Up to 100	100-1,000	1,000-25,000	More than 25,000
CPU	Core-i5-2xxx 2.1GHz or higher	Intel Xeon E5-2603 1.80 GHz	Intel Xeon E5-2603 1.80 GHz or higher	Intel Xeon E5-4640 2.10 GHz	
Number of Cores	4(8 vCPU)	8(16 vCPU)	8(16v CPU)	8(16 vCPU)	
RAM	16 GB	64 GB	64 GB	64 GB	
Min. Number of Hard Disks	1	2 SSD**	2 SSD**	2 SSD**	
Disk Space (GB) after Defining and Activating RAID	200*	500*	500*	500*	Consult with Global Services
Disk Performance: Read and Write Throughput	160+ MiB/s	160+ MiB/s	320+ MiB/s	320+ MiB/s	
Cloud Environment	AWS Volume Type: gp2 GC: Zonal Balanced PD	AWS Volume Type: gp2 GC: Zonal Balanced PD	AWS Volume Type: io1 GC: Zonal SSD PD	AWS Volume Type: io1 GC: Zonal SSD PD	

*Minimum 2 SSD are required for RAID. Consult with your local server provider regarding the number of recommended disks and RAID type.

Admin Servers

Requirements	Lab scale	Production
CPU	Core-i5-2xxx 2.1 GHz or higher	Core-i5-2xxx 2.1 GHz or higher
Number of Cores	4(8vCPU)	4(8vCPU)
RAM	8 GB	16 GB
Min. Number of Hard Disks	1	2 SSD**
Disk Space (GB) after defining and activating RAID	250*	500GB-2TB
Disk Performance: Read and Write Throughput	160+ MiB/s	160+ MiB/s
Cloud Environment	AWS Volume Type: gp2 GC: Zonal Balanced PD	AWS Volume Type: gp2 GC: Zonal Balanced PD

Bootstrap Servers

<i>Requirements</i>	<i>Lab scale</i>	<i>Production</i>
CPU	Core-i5-2xxx 2.1 GHz or higher	Core-i5-2xxx 2.1 GHz or higher
Number of Cores	4	4
RAM	8 GB	8 GB
Additional RAM for each Network Manager Instance [GB]	N/A	N/A
Min. Number of Hard Disks	1	2 SSD**
Disk Space (GB) after Defining and Activating RAID	100	200
Disk Performance: Read and Write Throughput	160+ MiB/s	160+ MiB/s
Cloud Environment	AWS Volume Type: gp2 GC: Zonal Balanced PD	AWS Volume Type: gp2 GC: Zonal Balanced PD

SOFTWARE REQUIREMENTS

- All servers: RedHat 8.8

Ordering

RV-SW/LINUX-CENTRAL

RADview software including licenses for EMS and 5 concurrent clients, LINUX-based Central system

RV-LIC/CPE/1G

License to manage one RAD 1 Gbps product.

RV-LIC/CPE/10G

License to manage one RAD 10 Gbps product.

RV-LIC/CPE/100G

License to manage one RAD 100 Gbps product.

International Headquarters

24 Raoul Wallenberg St., Tel Aviv 6971923, Israel
Tel 972-3-6458181 | Fax 972-3-7604732
Email market@rad.com

North American Headquarters

900 Corporate Drive, Mahwah, NJ 07430, USA
Tel 201-529-1100 | Toll Free: 800-444-7234 | Fax: 201-529-5777
Email market@radusa.com



Your Network's Edge®

www.rad.com

357-110-12/23 Specifications are subject to change without prior notice. © 1988–2024 RAD Data Communications Ltd. RAD products/technologies are protected by registered patents. To review specifically which product is covered by which patent, please see ipr.rad.com. The RAD name, logo, logotype, and the product names MiNID, Optimux, Airmux, IPmux, and MiCLK are registered trademarks of RAD Data Communications Ltd. All other trademarks are the property of their respective holders.