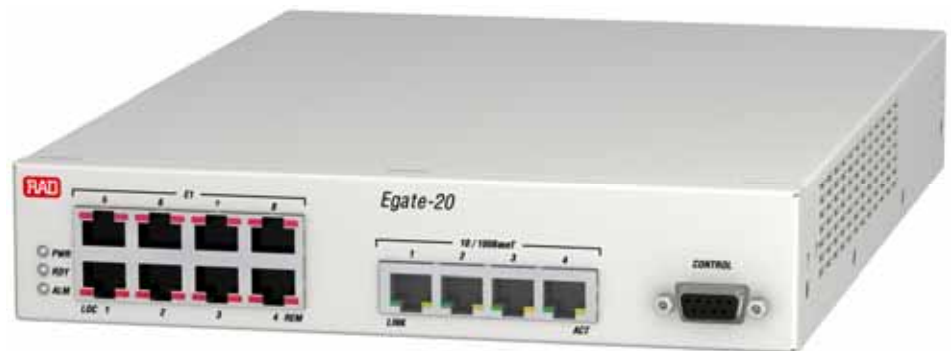


# Egate-20

## Channelized Ethernet Gateway

Flexible Ethernet aggregation of Fast Ethernet to eight fully channelized E1 or T1 circuits



- Transparent Ethernet services in point-to-point and point-to-multipoint topologies by using VLAN tagging, stacking and switching
- Efficient utilization of WAN interface at wire-speed
- Equipment and maintenance costs lower than other alternatives
- Four-level QoS according to 802.1p, DSCP, IP Precedence and per port

Egate-20 is a channelized Ethernet gateway for interconnecting PDH and packet-based networks.

The Ethernet gateway aggregates and switches Ethernet traffic into eight channelized E1 or T1 circuits, each supporting up to 248 or 192 Ethernet channels (248 over E1 or 192 over T1). The traffic is combined into channelized E1 or T1 streams, and handed over to the PSN via the unit's Fast Ethernet ports.

Egate-20 replaces current high-priced solutions, such as channelized  $n \times$  E1/T1 routers or multibox solutions based on cross-connects and switches.

Together with service scalability, small footprint, and low power consumption, Egate-20 significantly reduces equipment cost and simplifies network operation.

Deployed at a central location (see *Figure 1*), Egate-20 aggregates user Ethernet traffic received from remote devices, such as RAD's RICI-E1/T1, FCD, and ASMi, thus completing a full access solution from the service provider central site to the customer premises.

Typical applications include:

- Ethernet private E-line/E-LAN services
- Aggregation of Ethernet traffic over PDH wireless links
- Network management backhauling.



# Egate-20

## Channelized Ethernet Gateway

### BRIDGE

Using Egate-20 as a bridge in an SDH/SONET environment, service providers achieve seamless interconnection between customers utilizing different networks (TDM and packet-based), while maintaining the same service level attributes.

The bridge filters and forwards traffic at wire-speed, enabling full utilization of the high-priced WAN circuit.

VLAN tagging, stacking and striping at ingress and egress enable transporting user traffic transparently while keeping all user VLAN settings intact. In addition, the management traffic may be tagged as a different VLAN, fully separating user traffic from management data.

In VLAN-aware mode (IVL), frames are forwarded according to VLAN tags and MAC address.

This allows defining different user traffic domains to create point-to-point (E-Line) or point-to-multipoint (E-LAN) topologies. A VLAN tunnel can be created for separating management and user traffic.

Each bridge port switches and filters any number of VLANs. This enables each remote location to be part of numerous VLAN domains.

In a typical service provisioning structure (see *Figure 2*), Egate-20 links between users connected to the packet-switched network, and users connected to the TDM network. Virtual channels are established between the far-end users by tagging separate user traffic channels with VLANs (B, C and D). These virtual channels transparently forward all user traffic. In addition, all devices are managed over the VLAN A management channel, which enables secure separation between user traffic and management traffic.

### QUALITY OF SERVICE (QoS)

Egate-20 provides differentiated services on the same link according to Ethernet or IP marking. Classification is based on 802.1p, IP Precedence, DSCP or per port, while the traffic is forwarded by four strict priority queues.

### PROTOCOLS

Egate-20 utilizes native HDLC for encapsulating Ethernet traffic over E1/T1 circuits.

### DIAGNOSTICS AND STATISTICS

Comprehensive diagnostic and performance monitoring capabilities include:

- Ping and trace route for IP connectivity checks

- Statistics and alarms for the physical E1/T1 and Ethernet interfaces, and for the internal bridge.

### MANAGEMENT

Egate-20 can be managed using different ports and applications:

- Local out-of-band management via an ASCII terminal connected to the RS-232 port
- Remote out-of-band management via one of the four 10/100BaseT ports
- Remote inband management via one of the four Ethernet ports, performed using Telnet, Web browser or RADview, RAD's SNMP-based element management system.

Software upgrades and configuration files can be downloaded to Egate-20 via TFTP or XMODEM.

A dedicated VLAN tunnel is used to secure the management traffic and to separate it from user traffic.

Access to the unit's management software is password-protected. The unit can be managed by and report to up to 16 different managers simultaneously. This enables viewing the network status and managing the unit from different locations.

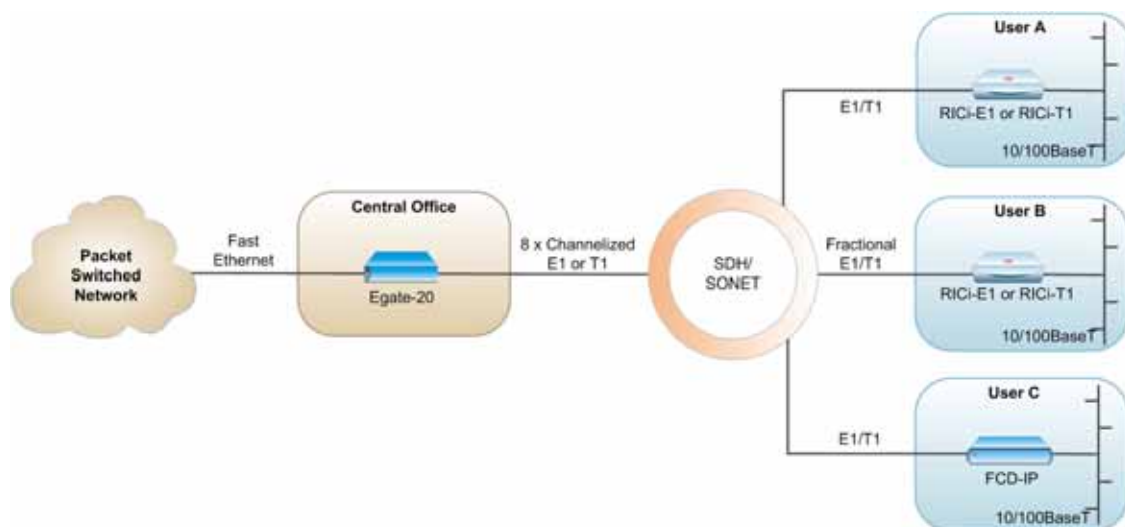


Figure 1. Aggregating Ethernet over E1/T1 Traffic

## Specifications

### E1 INTERFACE

**Number of Ports**  
8

**Compliance**  
G.703  
G.704

**Framing**  
Framed/unframed

**Data Rate**  
2.048 Mbps

**Line Coding**  
HDB3

**Line Impedance**  
120Ω (balanced)  
75Ω (unbalanced)

**Connector**  
RJ-45 (balanced)  
Coaxial (unbalanced)

### T1 INTERFACE

**Number of Ports**  
8

**Compliance**  
ANSI T1.403

**Data Rate**  
1.544 Mbps

**Line Code**  
B8ZS

**Framing**  
D4, ESF (framed)

**Line Impedance**  
100Ω (balanced)

**Diagnostics**  
Remote and FDL loopbacks

**Connector**  
RJ-45

### FAST ETHERNET INTERFACE

**Number of Ports**  
4

**Compliance**  
10/100BaseT, conforms to the relevant sections of IEEE 802.3 and 802.3u, 802.1p, and 802.1Q

**Data Rate**  
100 Mbps

**Max. Frame Size**  
1794 bytes

**Supported Modes**  
Autonegotiation, full/half duplex, flow control

**Connector**  
RJ-45

### WAN PROTOCOL

**Type**  
HDLC (native HDLC compatible with RAD products)

### INTERNAL BRIDGE

**LAN Table**  
Up to 2,048 MAC addresses (learned)

**Operation Modes**  
VLAN-aware, VLAN-unaware

**Filtering and Forwarding**  
Transparent or filter at wire-speed

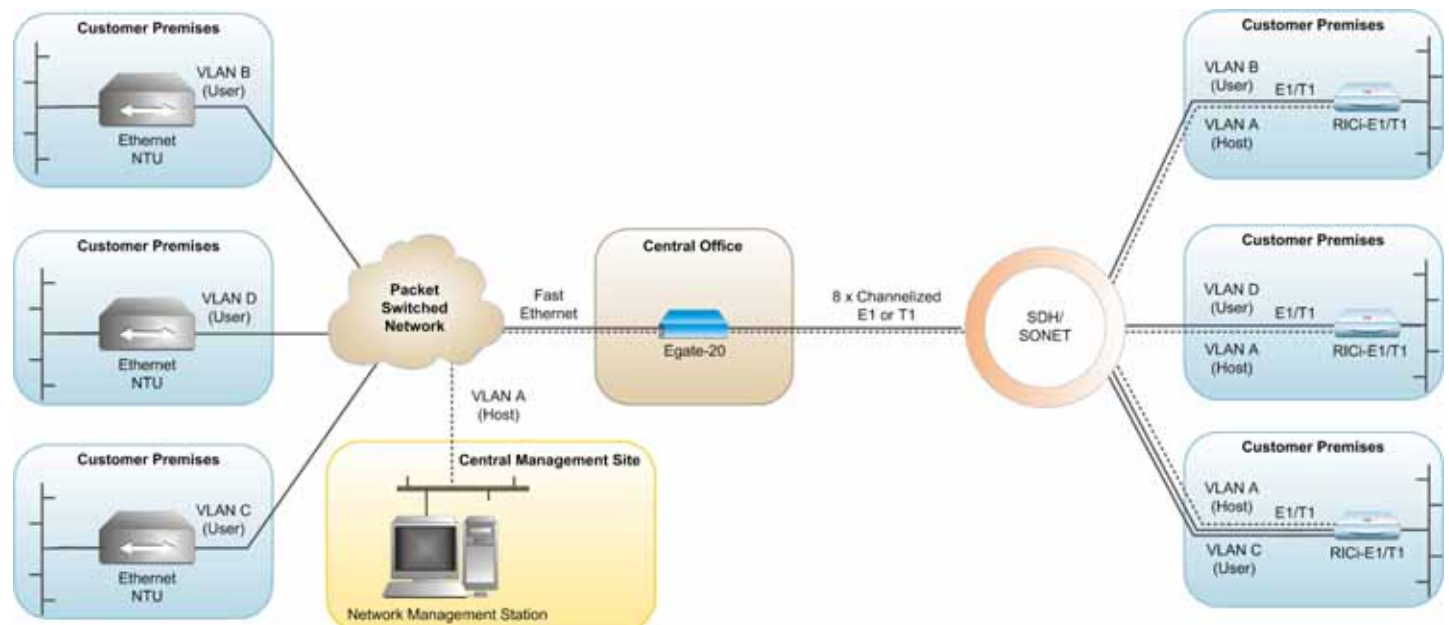


Figure 2. VLAN-Based Service Provisioning over Packet and TDM Networks

## Egate-20

## Channelized Ethernet Gateway

## CONTROL PORT

## Interface

RS-232/V.24 (DCE asynchronous)

## Data Rate

9.6, 19.2, 115.2 kbps

## Connector

9-pin, D-type, female

## GENERAL

## Indicators

PWR (green) – Power status

RDY (green) – Ready indicator

ALM (red) – Alarm status

## Diagnostics

E1: Remote loopback

T1: Remote and FDL loopbacks

## Power

AC: 100 to 240 VAC ( $\pm 10\%$ ), 50 to 60 Hz

DC: -48 VDC nominal

## Power Consumption

9W max

## Environment

Temperature: 0°–50°C (32°–122°F)

Humidity: Up to 90%, non-condensing

## Physical

Height: 43.7 mm (1.7 in / 1U)

Width: 215.9 mm (8.5 in)

Depth: 300.0 mm (11.8 in)

Weight: 2.2 kg (4.7 lb)

## Ordering

## Egate-20/C/\$

## Legend

C Interface:

CH Channelized

\$ Port:

E1 Balanced E1 port

E1U Unbalanced E1 port

T1 T1 port

*Note: Unbalanced E1 interface is provided via an adapter cable.*

## SUPPLIED ACCESSORIES

AC power cord

DC adapter plug

## CBL-RJ45/2BNC/E1

Interface adapter for converting a balanced E1 RJ-45 connector to a pair of BNC unbalanced coaxial connectors (if an unbalanced E1 interface is ordered)

## OPTIONAL ACCESSORIES

## RM-35/@

Hardware kit for mounting one or two Egate-20 units into a 19-inch rack

@ Rack mounting kit

(Default = both kits):

P1 Mounting one unit

P2 Mounting two units


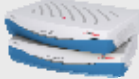

## WM-35

A hardware kit for mounting one Egate-20 unit on a wall

## CBL-DB9F-DB9M-STR

DB-9 to DB-9 control port cable

Product Comparison Table

	Egate-100 (Ver. 3.0)	RICI-E1, RICI-T1 (Ver 2.1)	Egate-20 (Ver. 1.1)
Feature			
Protocol type	HDLC GFP (ITU-T G.8040) PPP/BCP (RFC 1661, RFC 3518) MLPPP (BCP) as per RFC 1661, RFC 1990, RFC 3518	HDLC HDLC IS GFP (G.8040, G.7041/Y.1303)	HDLC
MAC address table	64000	1024	2048
QoS	802.1p DSCP IP precedence	802.1p IP precedence	802.1p DSCP IP precedence Per port
QoS mechanism	Strict	Strict	Strict
Number of queues	4	4	4
Hot-swappable power supplies	Yes	No	No
Host VLAN	Yes	Yes	Yes
VLAN tagging and stacking	Yes	Yes	Yes

## International Headquarters

24 Raoul Wallenberg Street  
Tel Aviv 69719, Israel  
Tel. 972-3-6458181  
Fax 972-3-6498250, 6474436  
E-mail market@rad.com

## North America Headquarters

900 Corporate Drive  
Mahwah, NJ 07430, USA  
Tel. 201-5291100  
Toll free 1-800-4447234  
Fax 201-5295777  
E-mail market@rad.com